

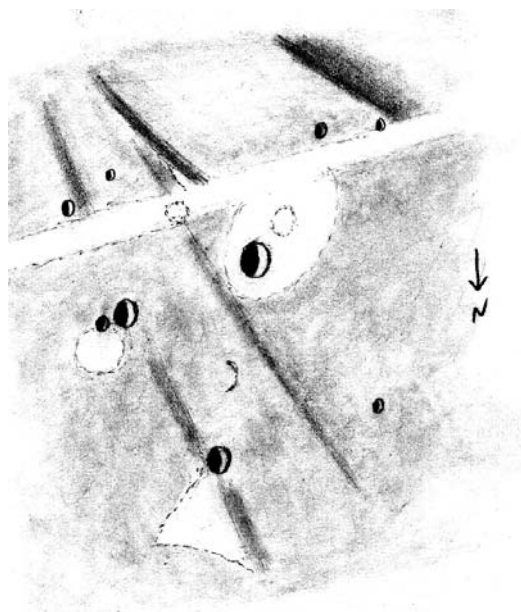


THE LUNAR OBSERVER

AN INDEPENDENT NEWSLETTER FOR STUDENTS OF THE MOON... NOVEMBER 2002

EDITED BY: Bill Dembowski - Elton Moonshine Observatory
219 Old Bedford Pike (Elton) - Windber, PA 15963 - DEMBOW@TWD.NET

FEATURE OF THE MONTH



SUESS (4.4° N – 47.6°W)

Sketch and Text by Robert H. Hays, Jr. – Worth, Illinois, USA

January 25, 2002 – 6 inch Newtonian – 170X – Seeing 6-7/10

I sketched this crater and vicinity on the evening of January 25/26, 2002 while timing two occultations. (The 4th-mag. star 1-Gem was occulted later that night.) This area is in western Oceanus Procellarum, southwest of Kepler. Suess itself is the largest crater in this sketch, and lies in the northeast part of a large, light-hued oval. A circular bright spot is just southwest of Suess B, and a small pit lies west of B. I noted a very delicate bit of crescent-shaped shading between Suess and Suess B which might be the remnant of an old ring. Suess D and a smaller crater are east of Suess, while to their south lies Suess H and a smaller pit. Southwest of Suess are Suess G with another crater to its west that is not shown on the Lunar Quadrant Map. The seeing on this night was good, but not outstanding.

Isolated bright patches were seen near Suess B and D, and a straight ray was obvious, passing south of Suess and just north of Suess H and G. This ray also intercepts part of the large, light oval mentioned earlier. This ray may be from Kepler. A series of wrinkle ridges run roughly northwest to southeast in this area. Interestingly, none of these wrinkles cross the ray, but a bright spot was noted within the ray right where one of the wrinkles would have crossed it.

OBSERVATIONS RECEIVED

MICHAEL AMATO - WEST HAVEN, CONNECTICUT, USA
Ray Maps of Proclus (6), Menelaus (6). Messier (6)

DANIEL DEL VALLE - AGUADILLA, PUERTO RICO
CCD Reiner Gamma

COLIN EBDON - COLCHESTER, ESSEX, ENGLAND
Sketches of Weigel & Rost, Zucchi, Harbinger Mountains

ROBERT H. HAYS, JR. - WORTH, ILLINOIS, USA
Sketches of Doppelmayer, Konig

ALEXANDER VANDENBOHEDE – BELGIUM
CCD of Proclus

ROBERT WLODARCZYK - CZESTOCHOWA, POLAND
Sketches of Billy & Hansteen, Mons Piton & Piazzini Smith, Gauss to Mare
Humboldtianum, Hessiodus A, Davy, Pallas & environs
Photographs of 20-day Moon, Moon & Saturn, 5-day Moon with Earthshine

LUNAR CALENDAR – NOVEMBER 2002 (UT)

4 . . . 01:00 . . . Moon at Perigee (222,546 miles – 358,143 km)

4 . . . 10:00 . . . Moon 1.9 Degrees NNE of Mercury

4 . . . 11:00 . . . Moon 7.7 Degrees NNE of Venus

4 . . . 20:35 . . . New Moon (Start of Lunation 988)

11 . . . 20:52 . . . First Quarter

16 . . . 12:00 . . . Moon at Apogee (252,150 miles – 405,185 km)

20 . . . 01:35 . . . Full Moon (Penumbral Lunar Eclipse)

26 . . . 07:00 . . . Moon 4.3 Degrees NNE of Jupiter

27 . . . 15:46 . . . Last Quarter

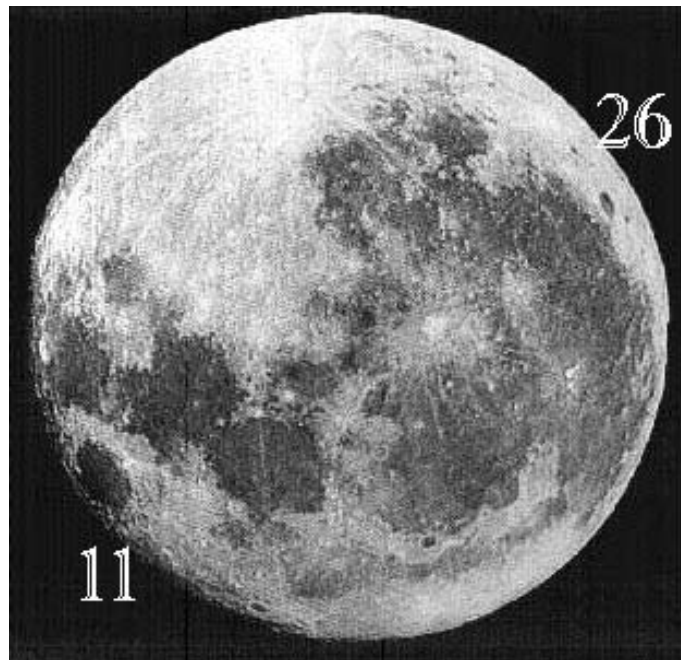
29 . . . 03:00 . . . Moon 0.28 Degrees WNW of Asteroid Vesta

FROM THE EDITOR:

A rather unexpected and welcomed turn of events has made it possible for me to resume publication of *The Lunar Observer*. I apologize for the frustrating on-again, off-again, nature of the past year; it has been unavoidable. Hopefully we can return to a long, uninterrupted run of *TLO* such as we had in the past. Thank you for your patience, well wishes, and participation (both past and, hopefully, future).

Clear and Steady Skies WMD

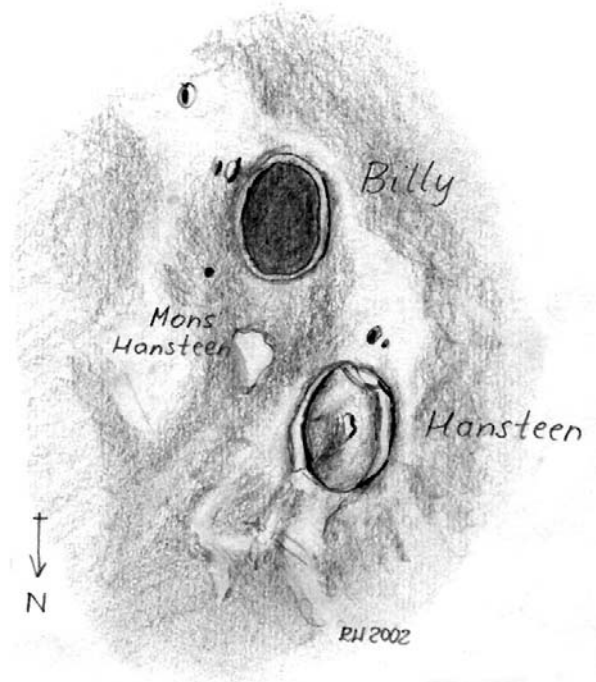
NOVEMBER FAVORABLE LIBRATIONS



Numbers shown above indicate the date of the month and the area of the Moon that will be most tilted toward a viewer on the Earth in November.

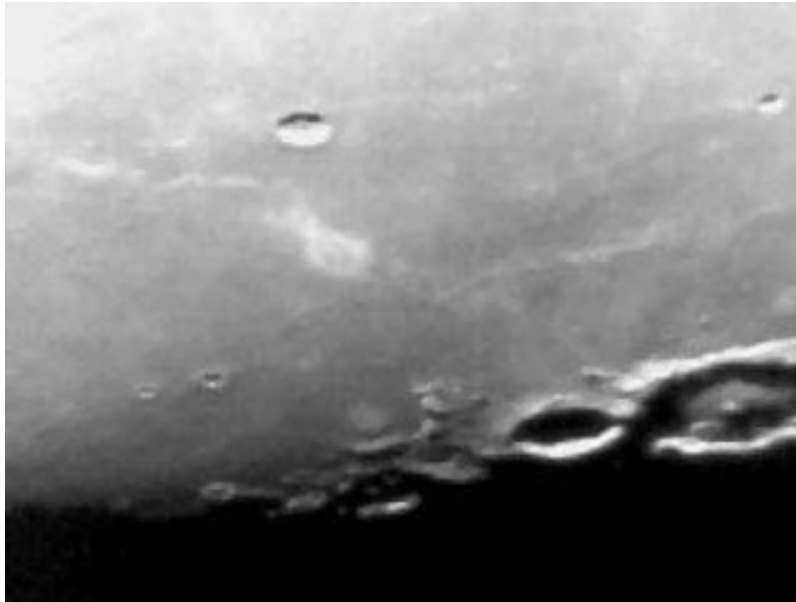
November 11, 2002 – 9.4 Degrees at 10:00 UT
November 26, 2002 – 8.7 Degrees at 20:00 UT

TOPOGRAPHICAL STUDIES



DARK FLOOR OF BILLY & HANSTEEN

Sketch by Robert Włodarczyk – Czestochowa, Poland
June 22, 2002 – 180mm Newtonian – 120X



REINER GAMMA

CCD Image by Daniel del Valle – Aguadilla, Puerto Rico
March 26, 2002 – 8 inch SCT – Logitech QuickCam