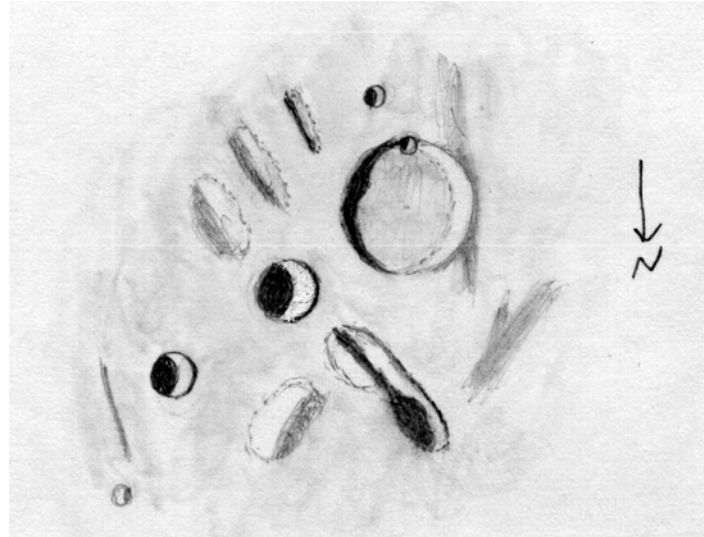


THE LUNAR OBSERVER

A NEWSLETTER FOR STUDENTS OF THE MOON APRIL 2000

EDITED BY: Bill Dembowski - ALPO Coordinator, Lunar Topographical Studies - President, American Lunar Society
219 Old Bedford Pike - Windber, PA 15963 - DEMBOW@TWD.NET

FEATURE OF THE MONTH



HIND - (7.9°S - 7.4°E)

Sketch and Text by Robert. H. Hays, Jr. - Worth, Illinois
6 inch (150mm) Newtonian - 170X - Seeing 4-6/10

I observed this area on the evening of September 18/19, 1999 after timing the occultation of 6th magnitude ZC 2708. Hind itself appeared to be an ordinary crater with a smooth floor and a craterlet perched on its south rim. Hind C is the crater to the south of Hind. This area was made interesting by surrounding features. The large crater immediately northeast of Hind is Hipparchus C with Hipparchus L farther to the northeast. The interior of Hipparchus C was considerably brighter than the interiors of either Hind or Hipparchus L. (I have tried to highlight this with correction fluid on the sketch.)

The similar-sized Pickering farther north (northeast of Hipparchus outside of sketched area) showed a similar internal brightness. I saw what appeared to be several elongated depressions aligned northwest-southeast with varying degrees of sharpness. The Lunar Quadrant Map shows several wide valleys in that area. This general area is located near the center of the visible side.

Editor: Hind is an 18 mile (29 km) crater named for John Russell Hind (1823-1895), and English astronomer. The diameters of other craters mentioned are: Hipparchus C 10 miles (13 km) and Hipparchus L 8 miles (13 km).

RECEIVED DURING THE MONTH

MICHAEL AMATO - WEST HAVEN, CONNECTICUT, USA
Sketches of Proclus (2), Menelaus (2), Messier

ALESSANDRO CIPOLAT BARES & PIERMARIO GUALDONI - MILAN, ITALY
CCD images of Copernicus, Plato, Ptolemaeus

MASSIMO CHIARINI - ROVERETO, ITALY
Sketch of Birt

PETER GREGO - REDNAL, BIRMINGHAM, ENGLAND
Sketch of Scoresby

ROBERT H. HAYS, JR. - WORTH, ILLINOIS, USA
Sketches of Menelaus, Harpalus, LaHire, Timocharis, Seleucus
Timings of 46 stars occulted by the Moon

ALAN HEATH - LONG EATON, NOTTINGHAM, ENGLAND
Sketches of Proclus Rays (2), Messier Rays

GILBERT LUBCKE - MIDDLETON, WISCONSIN, USA
CCD image of Lunar Eclipse

MICHAEL MATTEI - LITTLETON, MASSACHUSETTS, USA
CCD image of Clavius and Tycho

FELICIANO VILLARES RUBIO - RIBARROJA, VALENCIA, SPAIN
Sketches of Western Mare Crisium, Area surrounding Rima Ariadaeus

GIUSEPPE SORRENTINO - ROMA, ITALY
Video Stills of Stevinus (3)

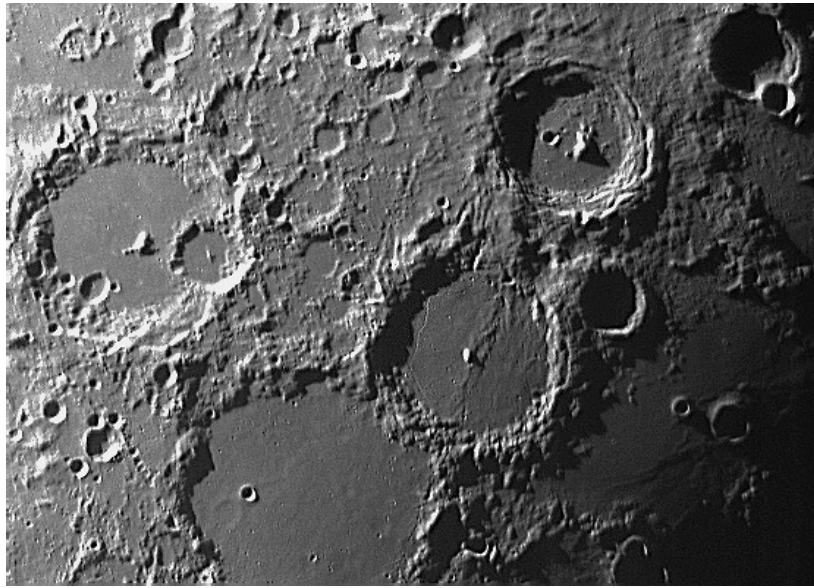
GRAHAME WHEATLEY - REDNAL, BIRMINGHAM, ENGLAND
Sketches of Birt, Kepler, Messier Rays

ROBERT WLODARCZYK - CZESTOCHOWA, POLAND
Sketches of Copernicus Rays, Triesnecker & Rilles, Reiner & Reiner Gamma, Stevinus

LUNAR CALENDAR - APRIL 2000 (UT)

3 . . . 07:00 . . . Moon 2.6 Degrees SSE of Venus
4 . . . 18:13 . . . New Moon (Start of Lunation 956)
8 . . . 22:00 . . . Moon at Perigee (228,825 miles - 368,248 km)
11 . . . 13:30 . . . First Quarter
18 . . . 17:41 . . . Full Moon
24 . . . 12:00 . . . Moon at Apogee (251,381 miles - 404,547 km)
26 . . . 19:32 . . . Last Quarter

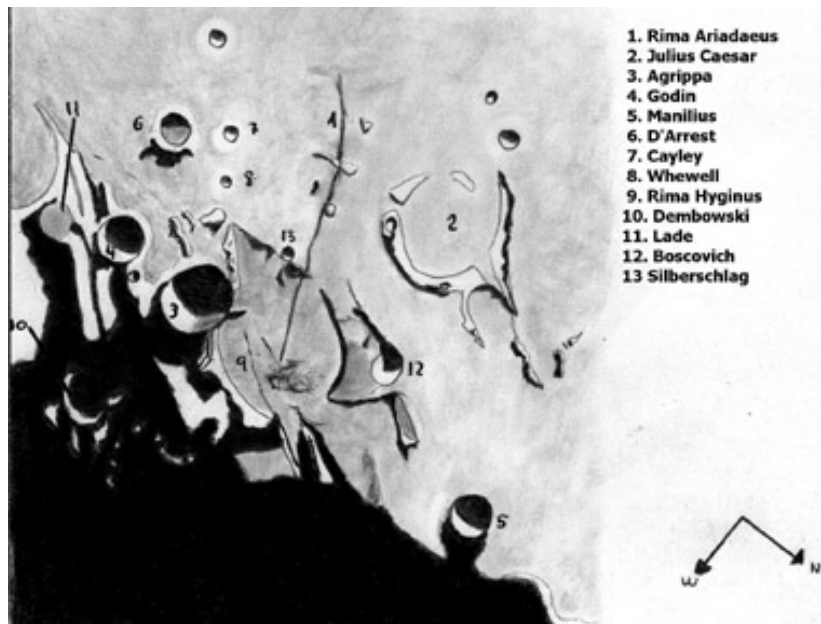
TOPOGRAPHICAL STUDIES



PTOLEMAEUS, ALPHONSUS, ARZACHEL CHAIN

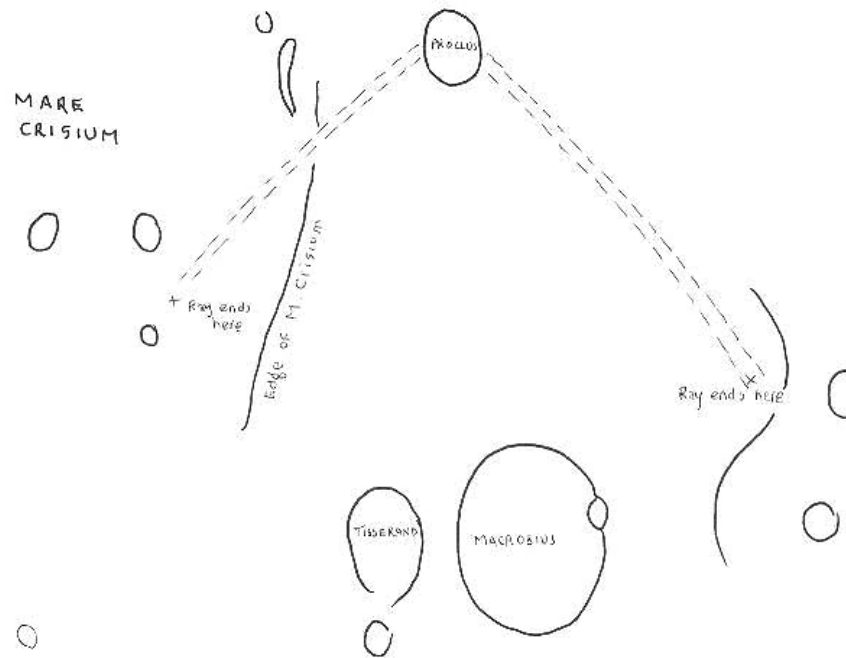
CCD Image by Alessandro Cipolat Bares and Piermario Gualdoni
Milan, Italy

March 14, 2000 - 250mm Takahashi Mewlon at f/12



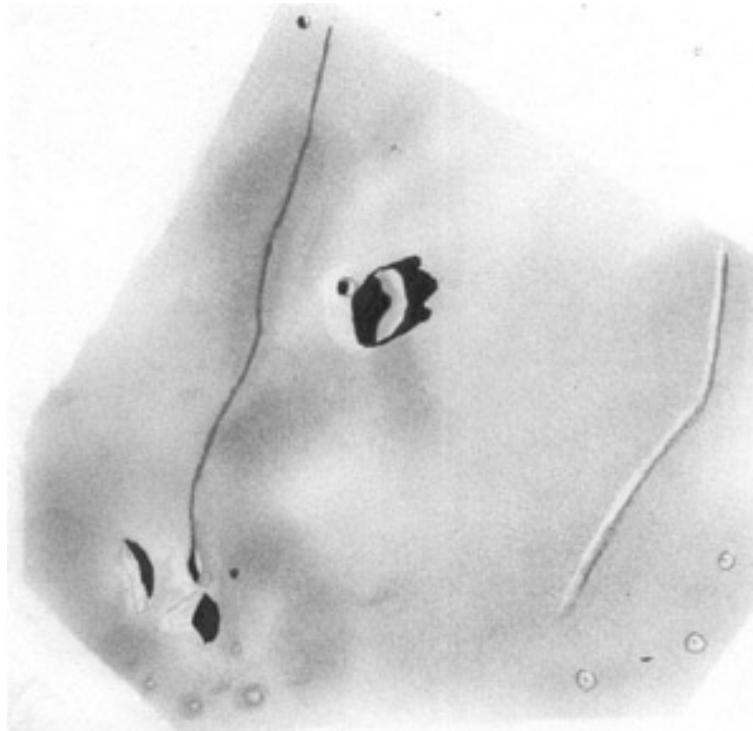
AREA AROUND RIMA ARIADAEUS

Sketch by Feliciano Villares Rubio - Valencia, Spain
March 15, 1997 - 8 inch SCT - 300X - Seeing 6/10



RAYS OF PROCLUS

Sketch by Alan Heath - Long Eaton, Nottingham, England
January 17, 2000 - 250 mm Newtonian



BIRT

Sketch by Massimo Chiarini - Rovereto, Italy
February 13, 2000 - 130 mm Refractor