

Jupiter Section



Jupiter

A publication of the Jupiter Section of the Association of Lunar and Planetary Observers

Copyright (c) 2010

Vol. 12, No. 15

November 10, 2010

Apparition Dates:

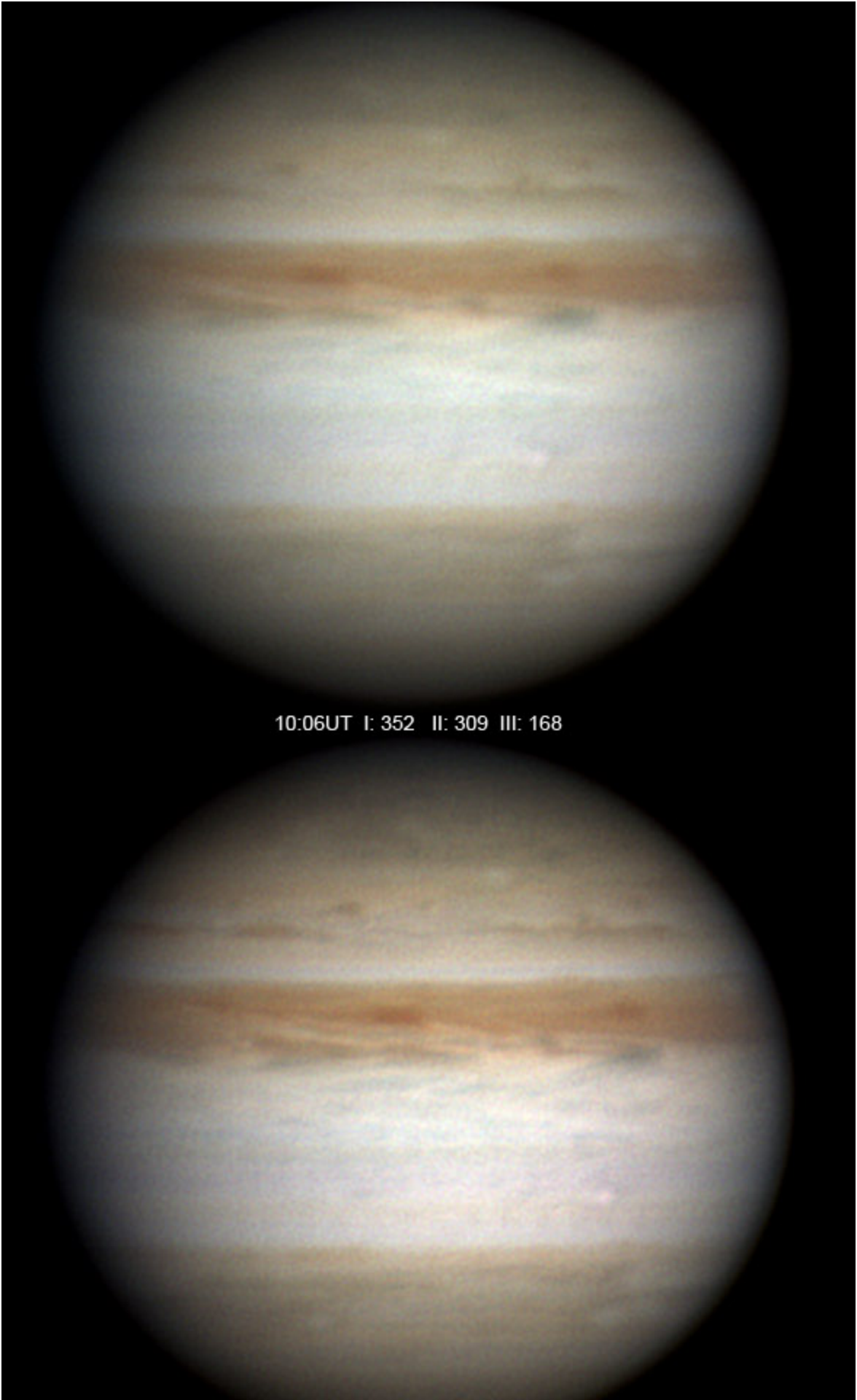
Jupiter was at Solar conjunction on February 28, 2010

Jupiter reached opposition on September 21, 2010

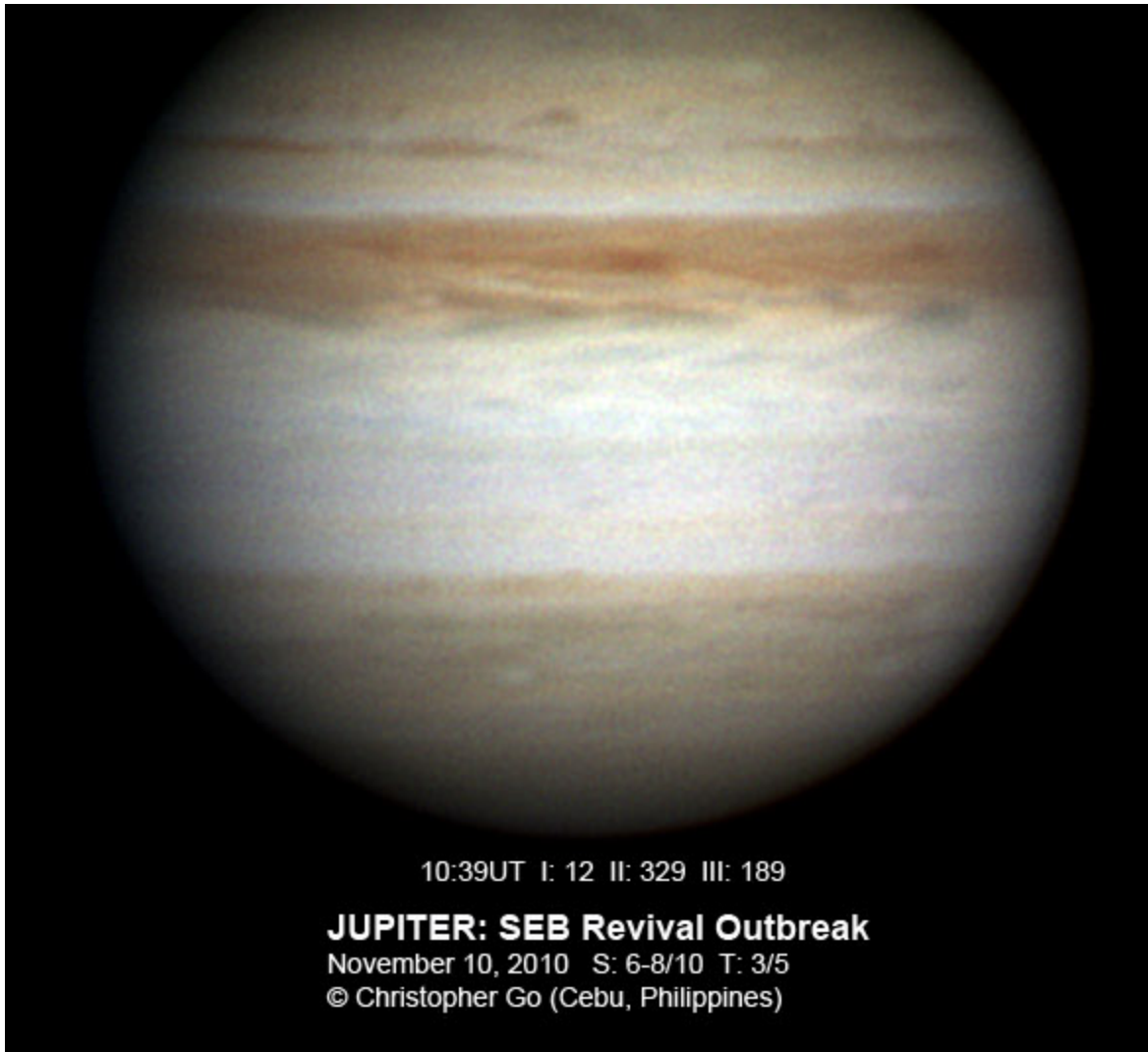
Jupiter returns to conjunction on April 6, 2011

The South Equatorial Belt Revival has begun! (we think)

On November 9 & 10, Christopher Go imaged a bright spot in the SEB. A bright spot like this is the harbinger of the SEB revival. The only way to know for sure is to observe as much as possible.

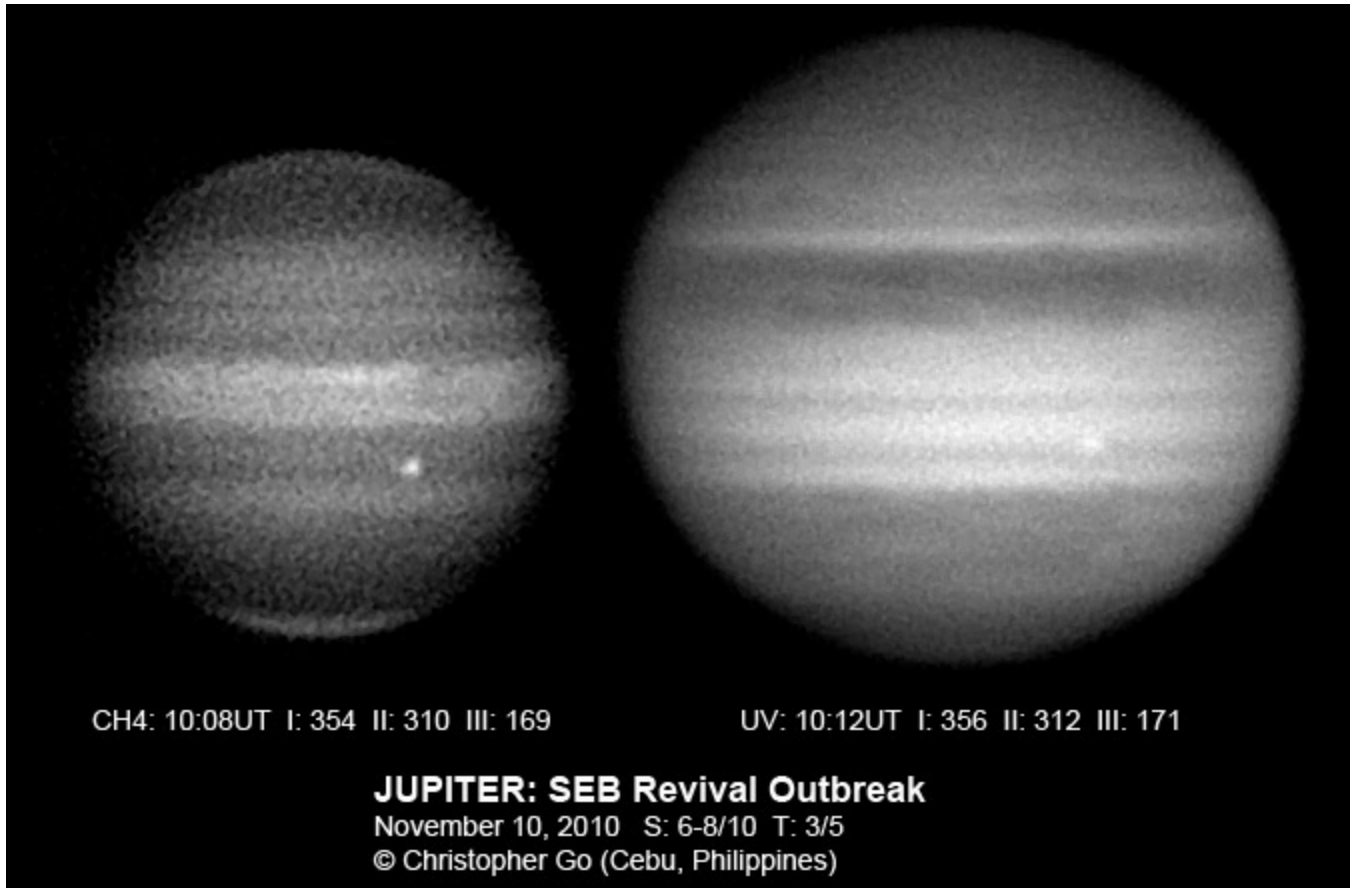


10:06UT I: 352 II: 309 III: 168



North is up. Preceding to the right.

While it doesn't exactly jump out at you in visible light, it is obvious in the methane band which is IR, and UV.



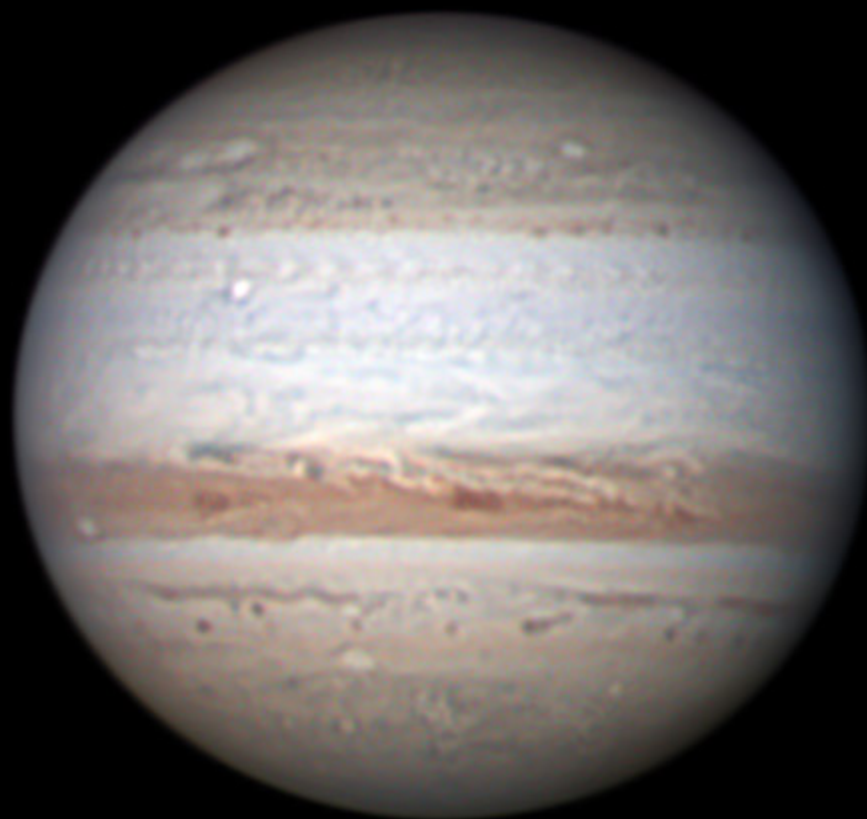
North is up. Preceding to the right.

Confirmation images. The spot is near Longitude 290(2).

D. Parker
Coral Gables, FL
16-in Newt @ f-22
SKYnyx 2-0 camera
Astrodon Filters:
R=I Series
G,B=E Series
RGB Image

10 Nov. 2010
00:26:03 UT

Seeing fair: 5-6
Trans: 5
No Wind
Temp: 65.5 F
Dewpoint: 45.0 F
Alt: 55 degs.



CM1=358.8 CM2=318.2 CM3=177.2

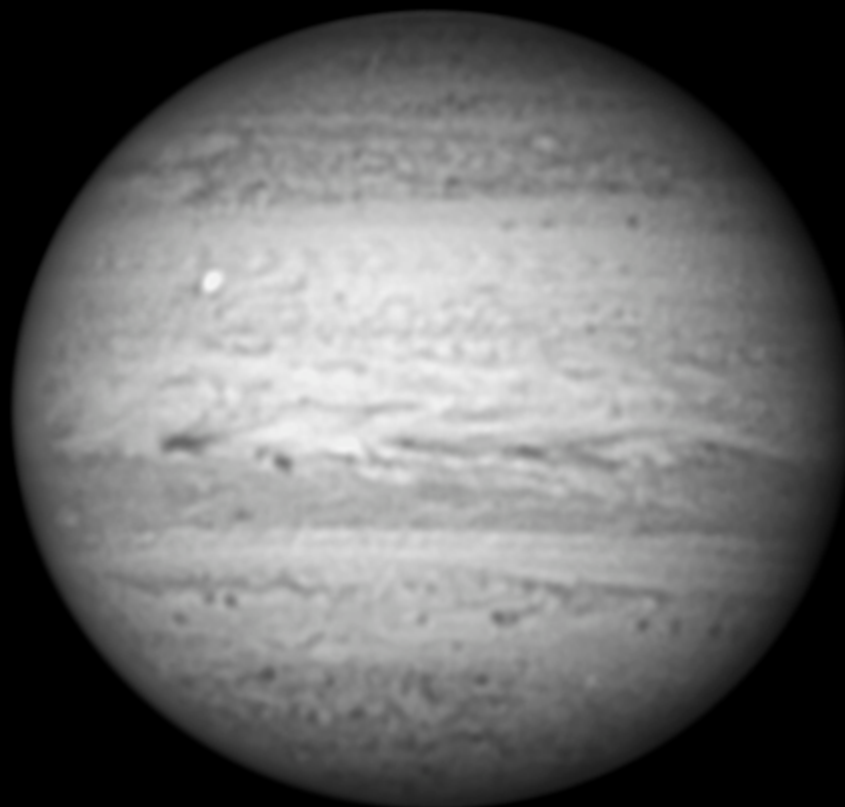
South is up. Preceding to the left.

D. Parker
Coral Gables, FL
16-in Newt @ f-22
Skynyx 2-0 camera

10 Nov. 2010
00:32:22 UT

Infrared 715 nM
Long Pass
Peak=780nM

Seeing fair: 5-6
Trans: 5
No Wind
Temp: 65.5 F
Dewpoint: 45.0 F
Alt: 56 degs.



CM1=2.6 CM2=322.0 CM3=181.1

South is up. Preceding to the left.



South is up. Preceding to the left.

Submission of Observations

Note to imagers: Please put your name, UT date, UT time, and CM1 and CM2 on all images.

Please submit observations as directed below:

Mail CM transit timings monthly to:

John McAnally
2124 Wooded Acres
Waco, TX 76710
E-mail: CPAJohnM@aol.com

Mail photographs and images at least monthly. We prefer e-mail attachment of JPG image.
Richard W. Schmude
Gordon College
Division of Mathematics and Natural Science

419 College Dr
Barnesville, GA 30204
E-mail: Schmude@gdn.edu

Mail observations of the timings of eclipses of Jupiter's satellites to:
John E. Westfall
P.O. Box 16131
San Francisco, CA 94116
E-mail: johnwestfall@comcast.net

ALPO_Jupiter

Join *ALPO_Jupiter*, the Jupiter Section's E-mail network. Provided for observers of Jupiter to share observations, make comments, ask questions and generally provide help to each other.

To join, send a blank e-mail to ALPO_Jupiter-subscribe@yahoogroups.com

Newsletter Editor: Craig MacDougal, Assistant Coordinator, ALPO Jupiter Section

Email: macdouc@verizon.net



-
- Recent Posts
 - [Observing Alert for the SEB](#)
 - [Jupiter Newsletter Vol. 12 No. 16](#)
 - [Jupiter Newsletter Vol. 12 No. 15](#)
 - [Jupiter Newsletter Vol. 12 No. 14](#)
 - [Jupiter Newsletter Vol. 12 No. 13](#)
- Pages
 - [About the ALPO](#)
 - [ALPO Jupiter Section](#)
 - [How to submit Images/Observations](#)
 - [Jupiter Alerts](#)
- Search for:
- Categories
 - [IMPACT Alert!](#)
 - [Jupiter Alerts](#)
 - [Jupiter Newsletter](#)
 - [Uncategorized](#)
- Jupiter Galilean Satellite Program
 - [Eclipse Timing Form \(Editable\)](#)
 - [Eclipse Visual Timing Report Form](#)
 - [Eclipses for the 2016-17 Apparition](#)
 - [Timing of Satellite Eclipses](#)
- Jupiter Section Links
 - [BAA Jupiter Page](#)
 - [International Jupiter](#)
 - [Join ALPO Jupiter Groups.io Group](#)
 - [Latest from NASA Galileo Homepage](#)
 - [Oct 10, 1999 Occultation of Star](#)

- [The latest on GALILEO](#)
- [Websites of ALPO Jupiters Observers](#)
- [Where to Send Jupiter Observations](#)
- Observations & Images
 - [Image Submissions](#)
 - [Jupiter Gallery \(latest images\)](#)
 - [Jupiter Images \(2005-07\)](#)

- Jupiter Events Calendar

January 2022

M T W T F S S

1 2

3 4 5 6 7 8 9

10 11 12 13 14 15 16

17 18 19 20 21 22 23

24 25 26 27 28 29 30

31

«Dec Feb»

- Meta
 - [Log in](#)
 - [Entries RSS](#)
 - [Comments RSS](#)
 - [WordPress.org](#)

Powered by [WordPress](#) Personalized by: [Larry Owens](#) Contact the [Webmaster](#)